

Lawn Solutions Australia

Nullarbor Couch Specification Guide

Technical and practical information for installation, maintenance and continued turf performance.

A favoured option for sportsfields, commercial applications and other locations requiring a durable, high performance grass cover.

Nullarbor Couch



Nullarbor Couch is a high-wear, low-maintenance, premium couch variety.

It has a fine leaf and low seed head ideally suited to either conventional or cylinder mowing that can provide a green, carpet-like appearance.

Nullarbor Couch is one of the most wear-resistant turf grass varieties available.

This, along with its extremely strong rhizome and stolon layers, as well as rapid regrowth properties; has made it a favoured option for sportsfields, commercial applications and other locations where a durable, high-performance grass cover is desired.

Nullarbor Couch makes for an ideal lawn, park or playing surface, being specified for new playing and park surfaces by many Local Government and design organisations right around Australia.

A great grass for full sun areas

Nullarbor Couch has been researched, evaluated and trialled for the past 20 years to deliver long-lasting performance in full sun areas.

Requiring at least 5-6 hours of sunlight per day, it is also best to apply a Lawn Solutions Australia Professional Fertiliser 2-3 times per year to maintain a dense, vigorous turf sward.

Otherwise, Nullarbor Couch maintenance requirements are relatively low and it has good tolerance to broadleaf herbicides for weed control.

Ideal for home lawns, sports or commercial projects

Producing a very dense turf, Nullarbor Couch Grass is widely used for sports and commercial landscaping projects as well as home gardens.

It is excellent for hard-wearing, high-use areas yet soft to walk on and has excellent regrowth and recovery properties.

It is best mown every 5-7 days in summer. It will go dormant in cooler southern-most climates that results in a loss of colour.

Its low dormancy means it has an early start to growth after winter, and it has rapid recovery from wear and other stresses.

Available Australia-Wide and backed by a 10-Year Product Warranty

All Nullarbor Couch purchases are accompanied with a Lawn Solutions Australia Product Warranty Certificate, to offer reassurance that it is genuine Nullarbor Couch, grown to the highest AusGAP certified standards.

When To Choose Couch Grass

Couch grass for many years has been a popular choice for both commercial and domestic projects.

However, over recent years soft leaf Buffalo varieties such as Sir Walter have been proven to be a superior performer in most domestic circumstances.

Nullarbor Couch is Ideal for large areas with high traffic areas

Whilst in some instances not being the ideal home lawn choice, couch does have traits that make it effective in certain areas.

Nullarbor Couch thrives in full sun areas, and has very strong horizontal growth that allows it to tolerate very low mowing heights.

These strong growth habits also attribute to its ability to handle high amounts of traffic, whilst enabling it to recover quicker if affected by wear and stress.



Characteristics

Nullarbor Couch is a Bermuda (*Cynodon dactylon*) Warm Season turfgrass.

It is tough, has dark colour and has great drought and wear resistance and under the right conditions spreads aggressively; at times to the point of being invasive and a nuisance.

Couch Grasses can creep into garden beds and then become problematic in attempts to keep it out, therefore consideration at planning stage should be given to border areas.

There are two types of Couch or Bermuda Grasses generally available, known as Common and Hybrid. Common Couch is the more aggressive of the two in terms of growth and invasiveness and is also known to produce a larger seed head.

Hybrid Couches generally have a finer texture and better colour and usually less aggressive and considered to be more manageable than common Couch

High quality couch grass turf areas are established from vegetative plant material and not from seed as it is more difficult to produce a sod-forming, consistent turf.

It is commonly established through solid turfing stolonising, and to a lesser extent plug-planting.

Growth Habit

Nullarbor Couch has a fine to medium leaf texture. It is a dark green, dense and low-growing type of turf through rhizomes and stolons which can tolerate low maintenance

An intensive maintenance program is required for it to look and perform to its full potential.

This type of turf grass has an extensive and deep root system.

Recommended Uses

Best adapted to hot, dry or tropical climates and is recommended for residential and commercial landscapes, golf courses, sport fields, parks and recreation areas.

This can be a tough yet high maintenance option turf for families with children and pets.

Temperature Tolerances

Excellent heat tolerance up to 44° C and performs best during periods of heat.

However, this is a turf that has a winter dormancy period and the leaf turns tan to brown at temperatures below 5° C and does not tolerate long periods of cold well.

Drought Tolerances

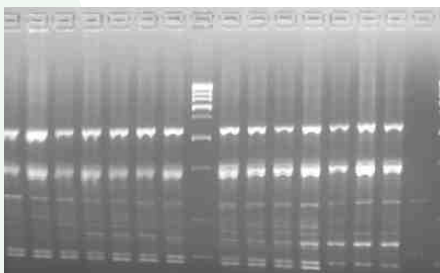
Superior. Highly drought resistant, but also responds well to irrigation during dry periods. Can go into summer dormancy when irrigation is withheld and then will return out of dormancy with the return of moisture. Some varieties tolerate the heat and drought conditions better than other varieties.

Shade Adaptation

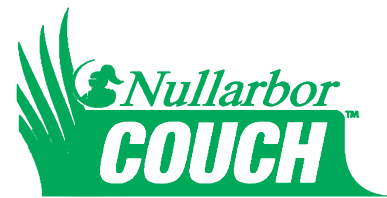
Poor. This turf type requires full sun for most of the day to grow properly and should not be used in shady sites.

Wear Resistance

Excellent. This type of turf withstands wear better than most grasses and can tolerate heavy traffic and when damaged, recovers more rapidly than other grasses.



Nullarbor Couch grown by Lawn Solutions Australia member producers has been DNA tested to ascertain consistency of distribution and type.



Independently audited turf production to meet AusGAP specifications; ensuring adherence to Australia's highest-quality turfgrass Genetic Assured Purity certification program.



Specification Summary:

Provide turf of an even thickness obtained from a specialist turf grower.

Type: - Nullarbor Couch
Cynodon dactylon

Certification:

- DNA Certified by supplier
- Supplier to be AusGap certified
- Certifications to be provided prior to delivery to superintendent

Detail:

- Turf to be cut as 20mm sod
- Weed and pest free

Other:

- Turf to be laid within six hours of delivery and 24 hours of cutting on farm.
- Prior to laying apply Lawn Launcher starter fertiliser as per manufacturer recommendations.
- Lay turf parallel to contours on prepared surface with cross joints to be staggered and butt jointed together.
- Roll turf following laying to achieve consistent contact to soil profile.
- Water immediately following installation until topsoil layer is sufficiently moist and maintain as per establishment requirements.



Lawn Solutions Australia Pty. Ltd.

PO Box 282 Berry NSW 2535

Phone: 1300 883711

Email: info@lawnsolutionsaustralia.com.au

www.lawnsolutionsaustralia.com.au